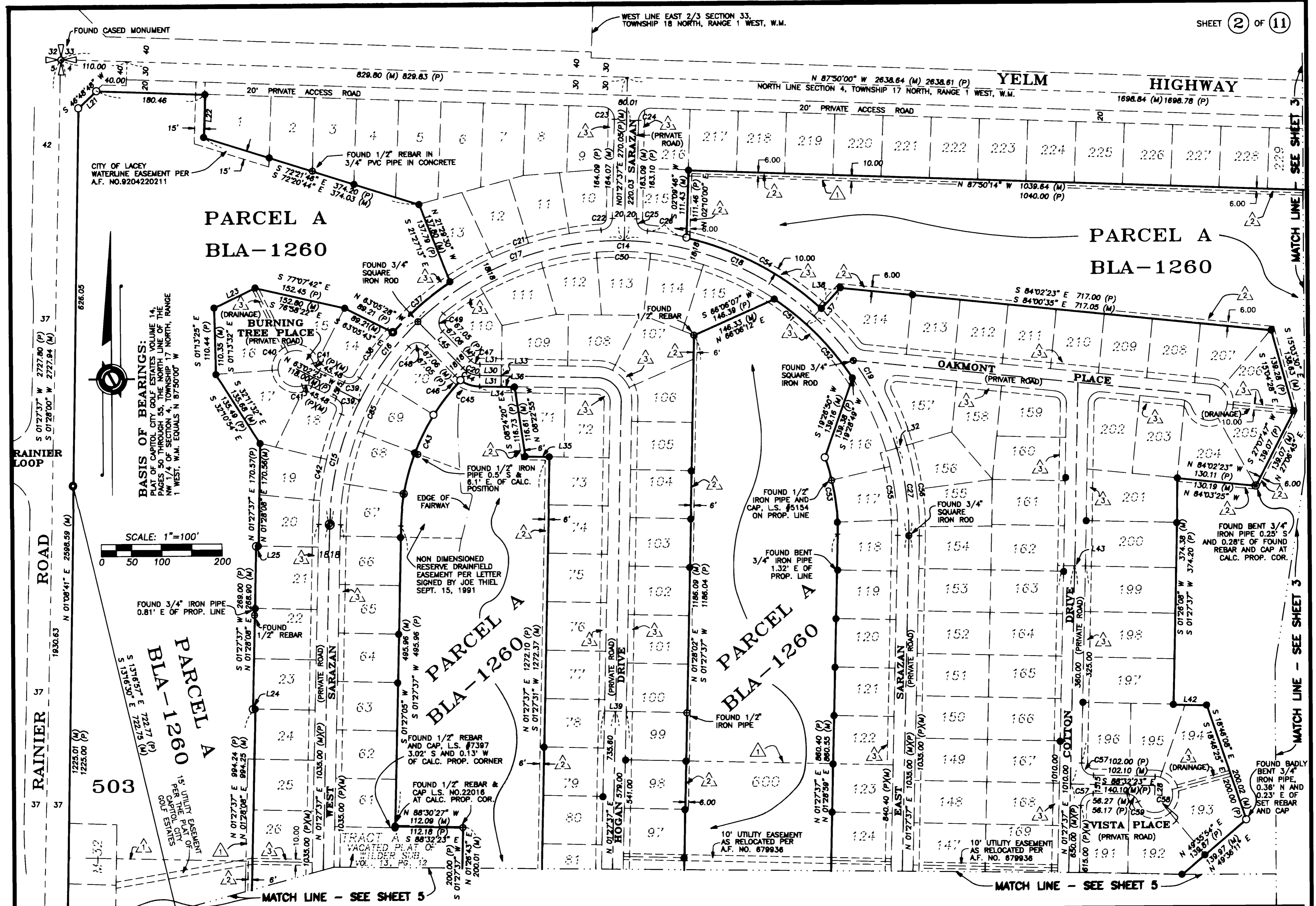
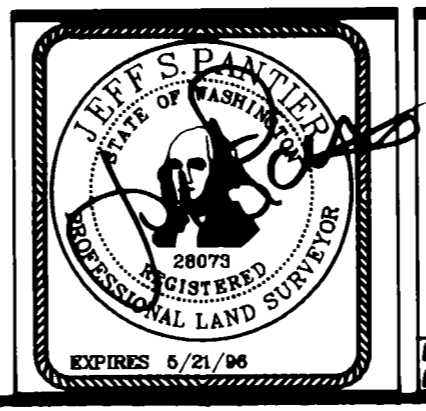


Survey V. 34 P. 124



AUDITOR'S CERTIFICATE
 Filed for record this _____ day of _____, 19____ at _____ M. in book _____ of Surveys at page _____ at the request of JEFF S. PANTIER
 THURSTON COUNTY AUDITOR DEPUTY

SURVEYOR'S CERTIFICATE
 This map correctly represents a survey made by me or under my direction in conformance with the requirements of the Survey Recording Act at the request of NATIONAL GOLD PROPERTIES, INC.
Jeff S. Pantier DATE Aug. 4, 1994
 REGISTERED PROFESSIONAL LAND SURVEYOR CERT. #28073

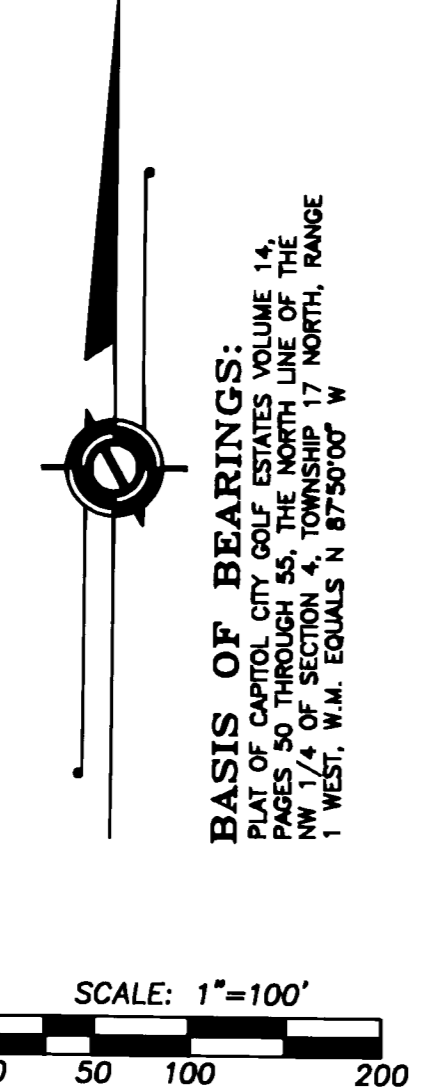
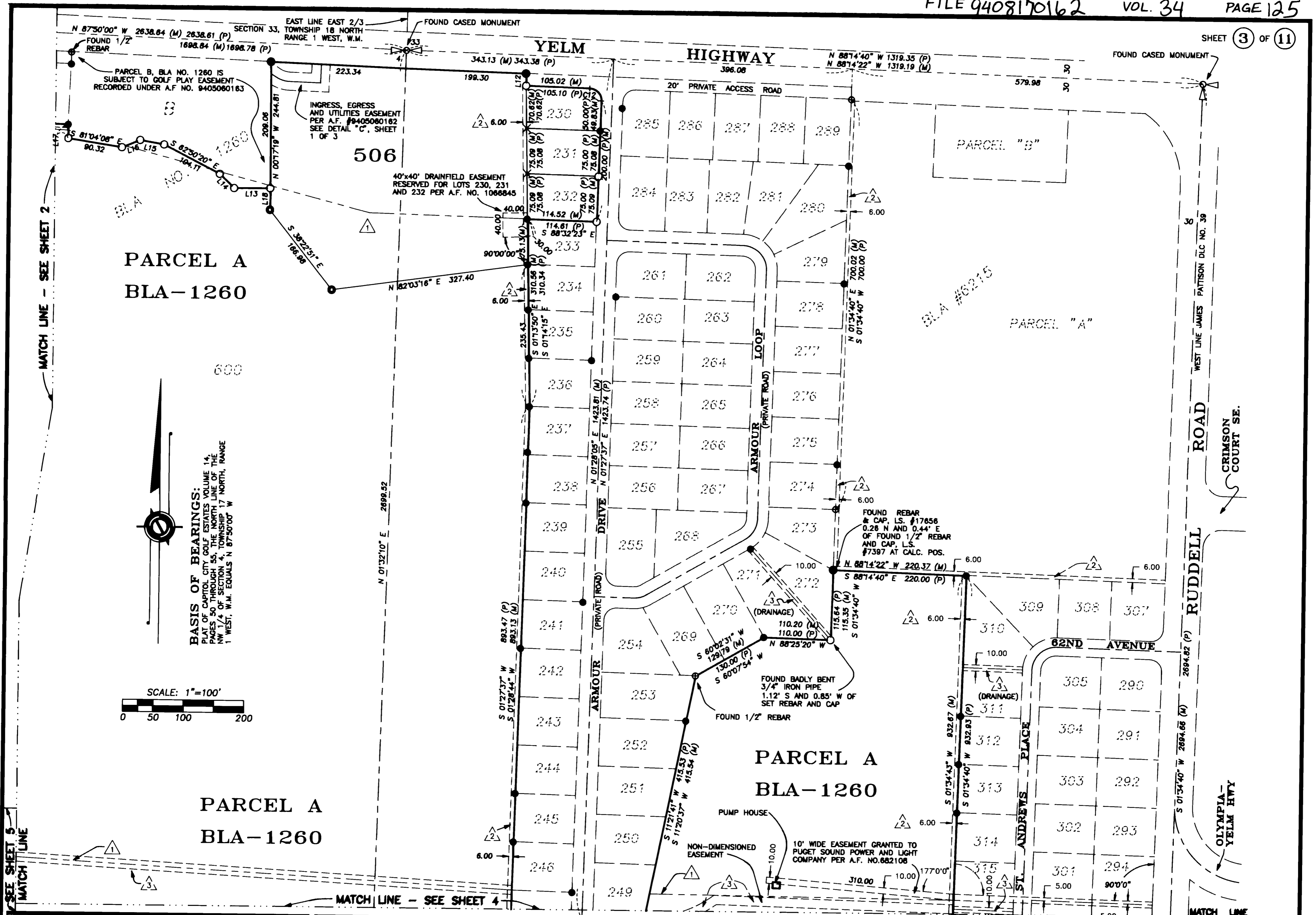


JAMES A. PANTIER & ASSOC., INC.
LAND SURVEYORS
A Professional Services Corporation
 6326 MARTIN WAY SUITE G
 LACEY, WA 98516
 491-9744
 DRAWN BY: L. PILIARIS CHECKED BY: J.S.P. JOB NO: P2714

AUDITOR'S INDEXING DATA

QUARTER	SECTION	TOWNSHIP	RANGE
NE 1/4 OF SW 1/4 OF SE 1/4 OF NW 1/4	4	17N	1W
			W. M.

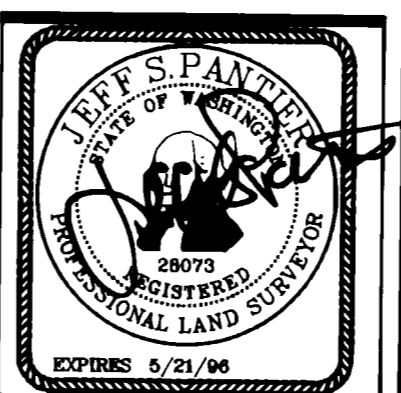
Survey
V. 34 P. 125



BASIS OF BEARINGS:
PLAT OF CAPITOL CITY GOLF ESTATES VOLUME 14,
PAGES 50 THROUGH 55, THE NORTH LINE OF THE
NW 1/4 OF SECTION 4, TOWNSHIP 17 NORTH, RANGE
1 WEST, W.M. EQUALS N 87°30'00" W

AUDITOR'S CERTIFICATE
Filed for record this _____ day of _____, 19____ at _____M. in book _____ of Surveys at page _____ at the request of JEFF S. PANTIER
THURSTON COUNTY AUDITOR DEPUTY

SURVEYOR'S CERTIFICATE
This map correctly represents a survey made by me or under my direction in conformance with the requirements of the Survey Recording Act at the request of NATIONAL GOLF PROPERTIES, INC.
Jeff S. Pantier Aug. 4, 1994
JEFF S. PANTIER DATE
REGISTERED PROFESSIONAL LAND SURVEYOR CERT. #28073

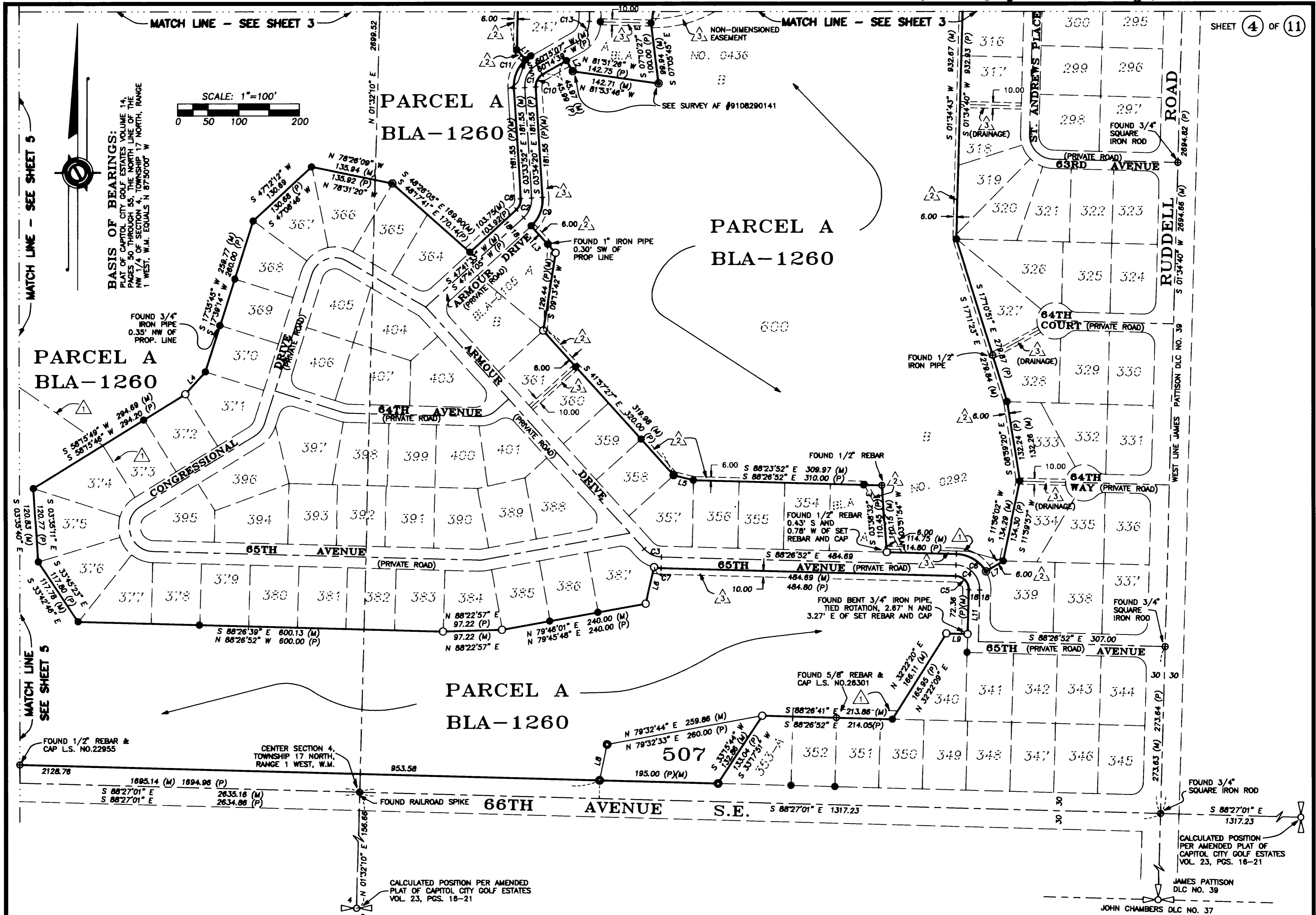


JAMES A. PANTIER & ASSOC., INC.
LAND SURVEYORS
A Professional Services Corporation
6326 MARTIN WAY SUITE G
LACEY, WA 98516
491-9744
DRAWN BY: L. PILIARIS CHECKED BY: J.S.P. JOB NO: P2714

AUDITOR'S INDEXING DATA			
QUARTER	SECTION	TOWNSHIP	RANGE
NW 1/4 OF SW 1/4	4	17N	1W

W. M.

Survey V. 34 P. 126



AUDITOR'S CERTIFICATE

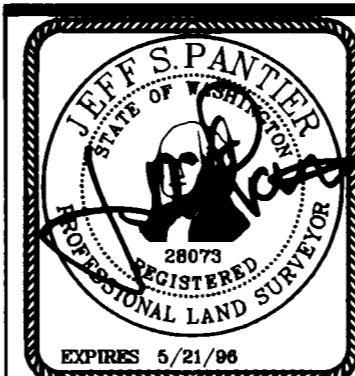
Filed for record this _____ day of _____, 19____ at _____ M. in book _____ of Surveys at page _____ at the request of JEFF S. PANTIER

THURSTON COUNTY AUDITOR _____ DEPUTY

SURVEYOR'S CERTIFICATE

This map correctly represents a survey made by me or under my direction in conformance with the requirements of the Survey Recording Act at the request of NATIONAL GOLF PROPERTIES, INC.

Jeff S. Pantier DATE AUG. 4, 1994
JEFF S. PANTIER REGISTERED PROFESSIONAL LAND SURVEYOR CERT. #28073



JAMES A. PANTIER & ASSOC., INC. LAND SURVEYORS A Professional Services Corporation

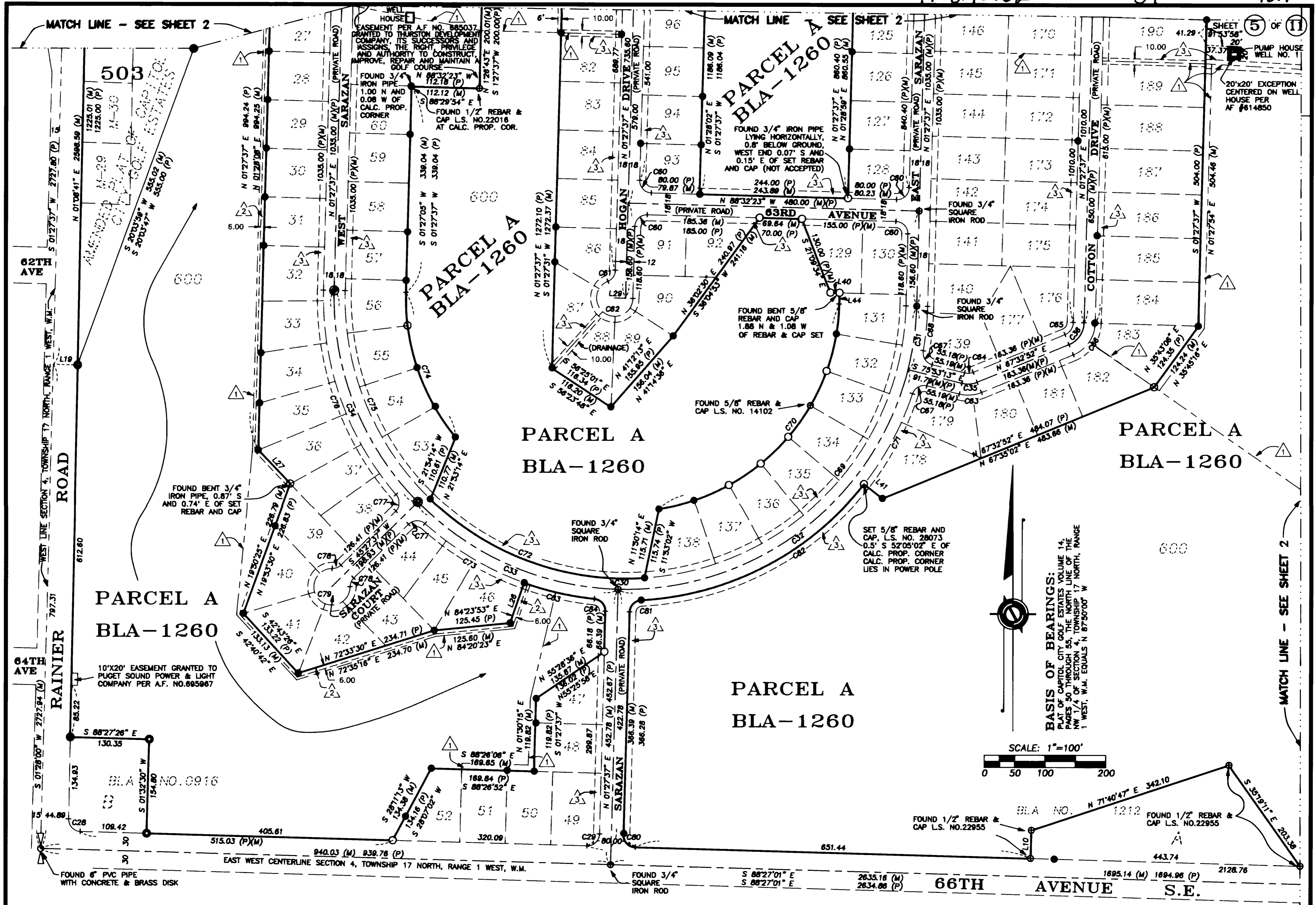
6326 MARTIN WAY SUITE G LACEY, WA 98516 491-9744

DRAWN BY: L. PILIARIS CHECKED BY: J.S.P. JOB NO: P2714

AUDITOR'S INDEXING DATA

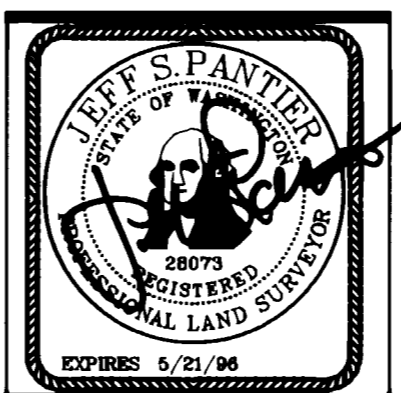
QUARTER	SECTION	TOWNSHIP	RANGE
NW 1/4 OF SW 1/4 OF NE 1/4 OF SE 1/4 OF SW 1/4	4	17N	1W
			W. M.

Survey V.34 P.127



AUDITOR'S CERTIFICATE
 Filed for record this _____ day of _____, 19____ at _____ M. in book _____ of Surveys at page _____ at the request of JEFF S. PANTIER
 THURSTON COUNTY AUDITOR DEPUTY

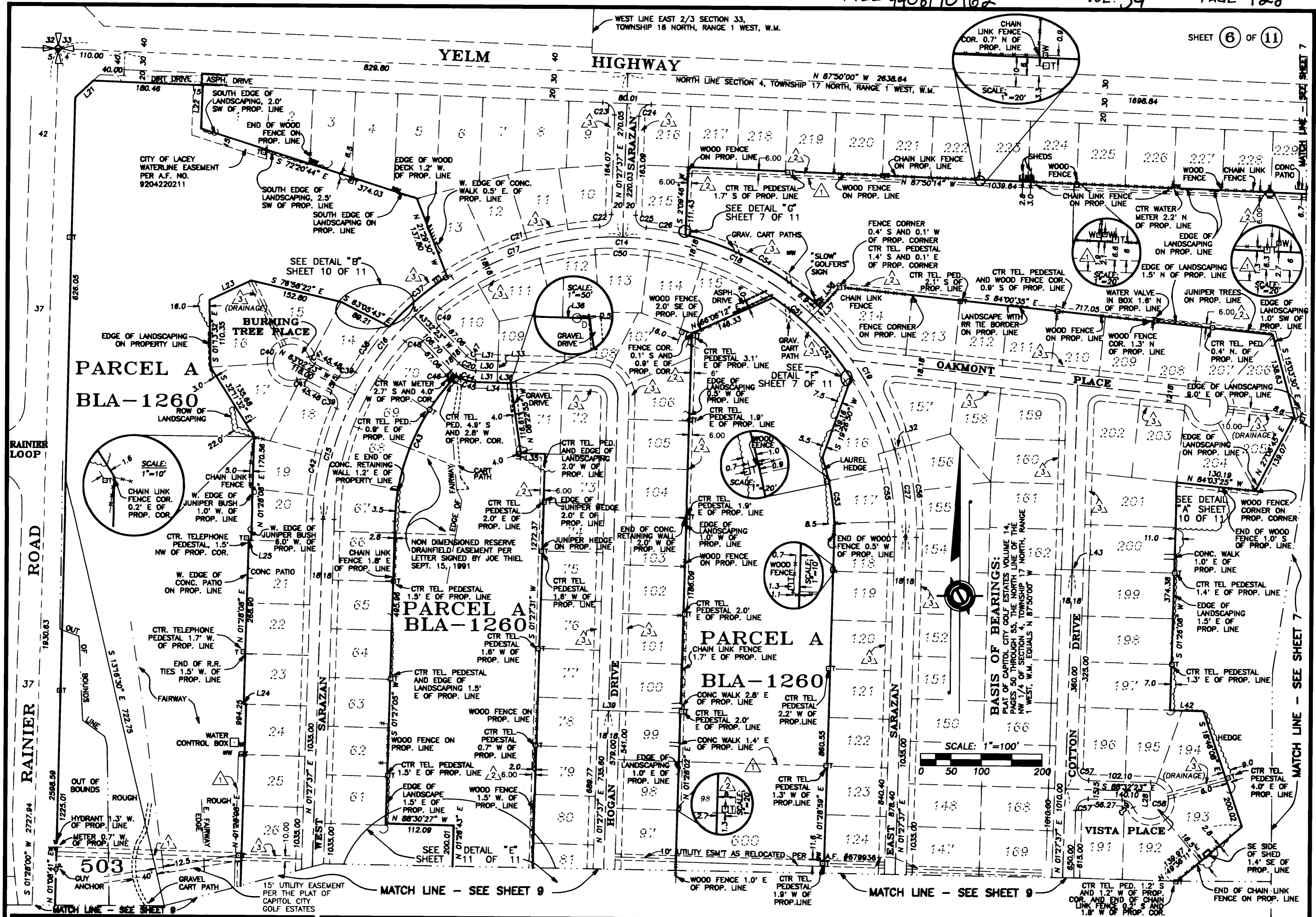
SURVEYOR'S CERTIFICATE
 This map correctly represents a survey made by me or under my direction in conformance with the requirements of the Survey Recording Act at the request of NATIONAL GOLF PROPERTIES, INC.
Jeff S. Pantier Aug. 4, 1994
 JEFF S. PANTIER REGISTERED PROFESSIONAL LAND SURVEYOR DATE CERT. #28073



JAMES A. PANTIER & ASSOC., INC.
LAND SURVEYORS
A Professional Services Corporation
 6326 MARTIN WAY SUITE G
 LACEY, WA 98516
 491-9744
 DRAWN BY: L. PILIARIS CHECKED BY: J.S.P. JOB NO: P2714

AUDITOR'S INDEXING DATA

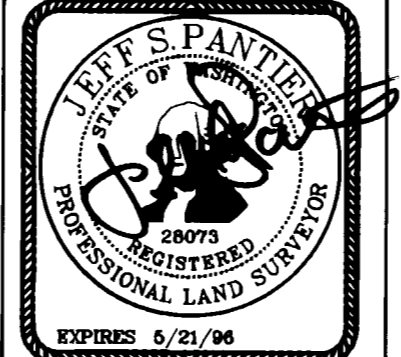
QUARTER	SECTION	TOWNSHIP	RANGE
NW 1/4 OF SW 1/4 OF NE 1/4 OF SW 1/4 OF NW 1/4 OF	4	17N	1W
			W. M.



Survey V. 34 P. 128

AUDITOR'S CERTIFICATE
 Filed for record this _____ day of _____, 19____ at _____ M. in book _____ of Surveys at page _____ at the request of **JEFF S. PANTIER**
 THURSTON COUNTY AUDITOR DEPUTY

SURVEYOR'S CERTIFICATE
 This map correctly represents a survey made by me or under my direction in conformance with the requirements of the Survey Recording Act at the request of **NATIONAL GOLF PROPERTIES, INC.**
Jeff S. Pantier Aug. 4, 1994
 JEFF S. PANTIER REGISTERED PROFESSIONAL LAND SURVEYOR CERT. #28073

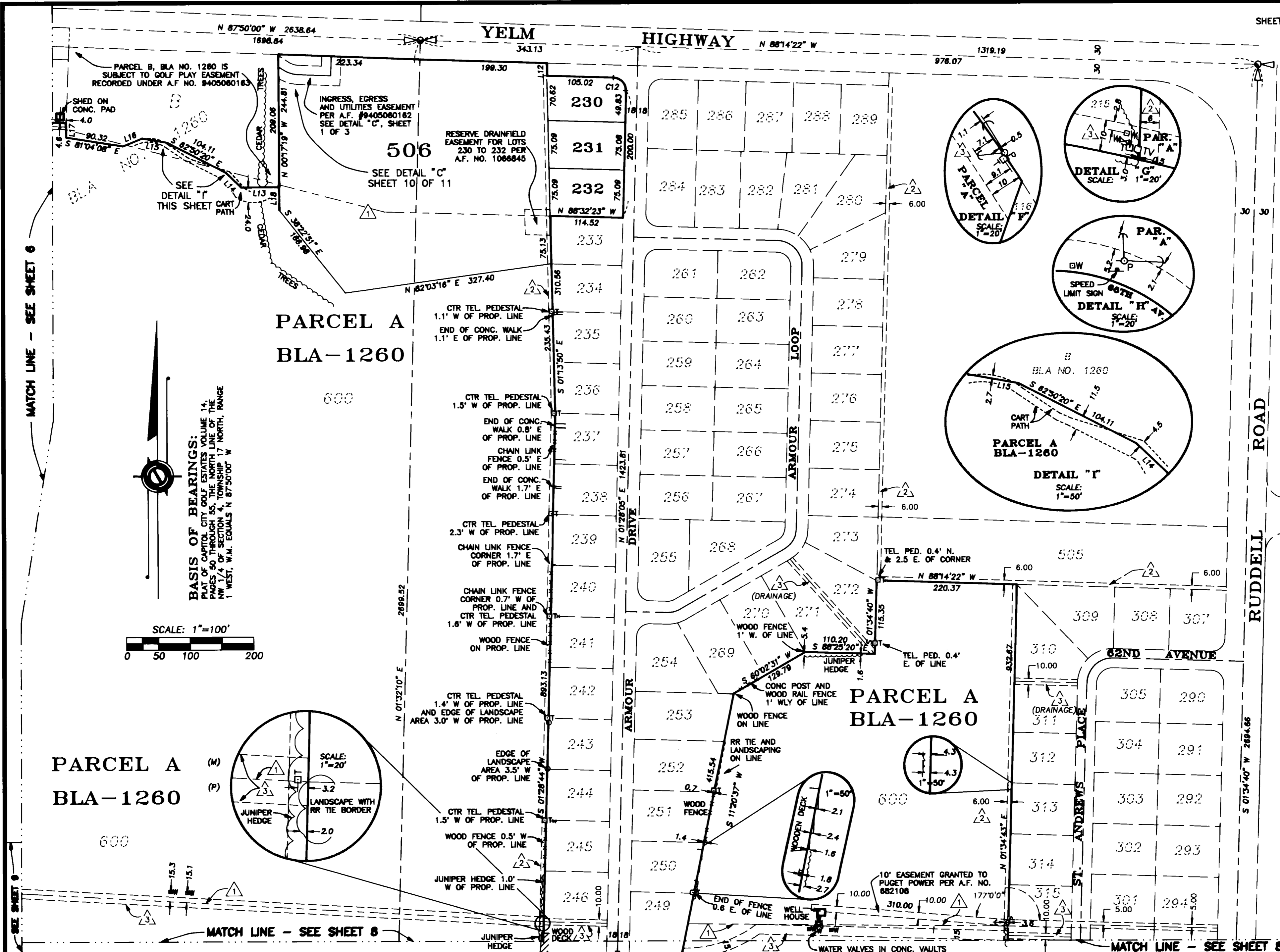


JAMES A. PANTIER & ASSOC., INC.
LAND SURVEYORS
A Professional Services Corporation
 6326 MARTIN WAY SUITE G
 LACEY, WA 98516
 491-9744
 DRAWN BY: L. PILIARIS CHECKED BY: J.S.P. JOB NO: P2714

AUDITOR'S INDEXING DATA

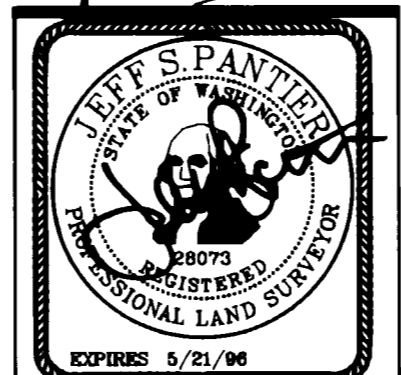
QUARTER	SECTION	TOWNSHIP	RANGE
NW 1/4 OF S 1/4 OF S 3/4 OF S 3/4 OF NW 1/4	4	17N	1W
			W. M.

Survey V.34 p.129



AUDITOR'S CERTIFICATE
 Filed for record this _____ day of _____, 19____ at _____M. in book _____ of Surveys at page _____ at the request of JEFF S. PANTIER
 THURSTON COUNTY AUDITOR _____ DEPUTY _____

SURVEYOR'S CERTIFICATE
 This map correctly represents a survey made by me or under my direction in conformance with the requirements of the Survey Recording Act at the request of NATIONAL GOLF PROPERTIES, INC.
 JEFF S. PANTIER _____ DATE _____
 REGISTERED PROFESSIONAL LAND SURVEYOR CERT. #28073



JAMES A. PANTIER & ASSOC., INC.
LAND SURVEYORS
 & Professional Services Corporation
 6326 MARTIN WAY SUITE G
 LACEY, WA 98516
 491-9744
 DRAWN BY: L. PILARIS CHECKED BY: J.S.P. JOB NO: P2714

AUDITOR'S INDEXING DATA

QUARTER	SECTION	TOWNSHIP	RANGE
NW 1/4 OF SW 1/4 OF NW 1/4 OF NW 1/4	4	17N	1W
			W. M.

MATCH LINE - SEE SHEET 7

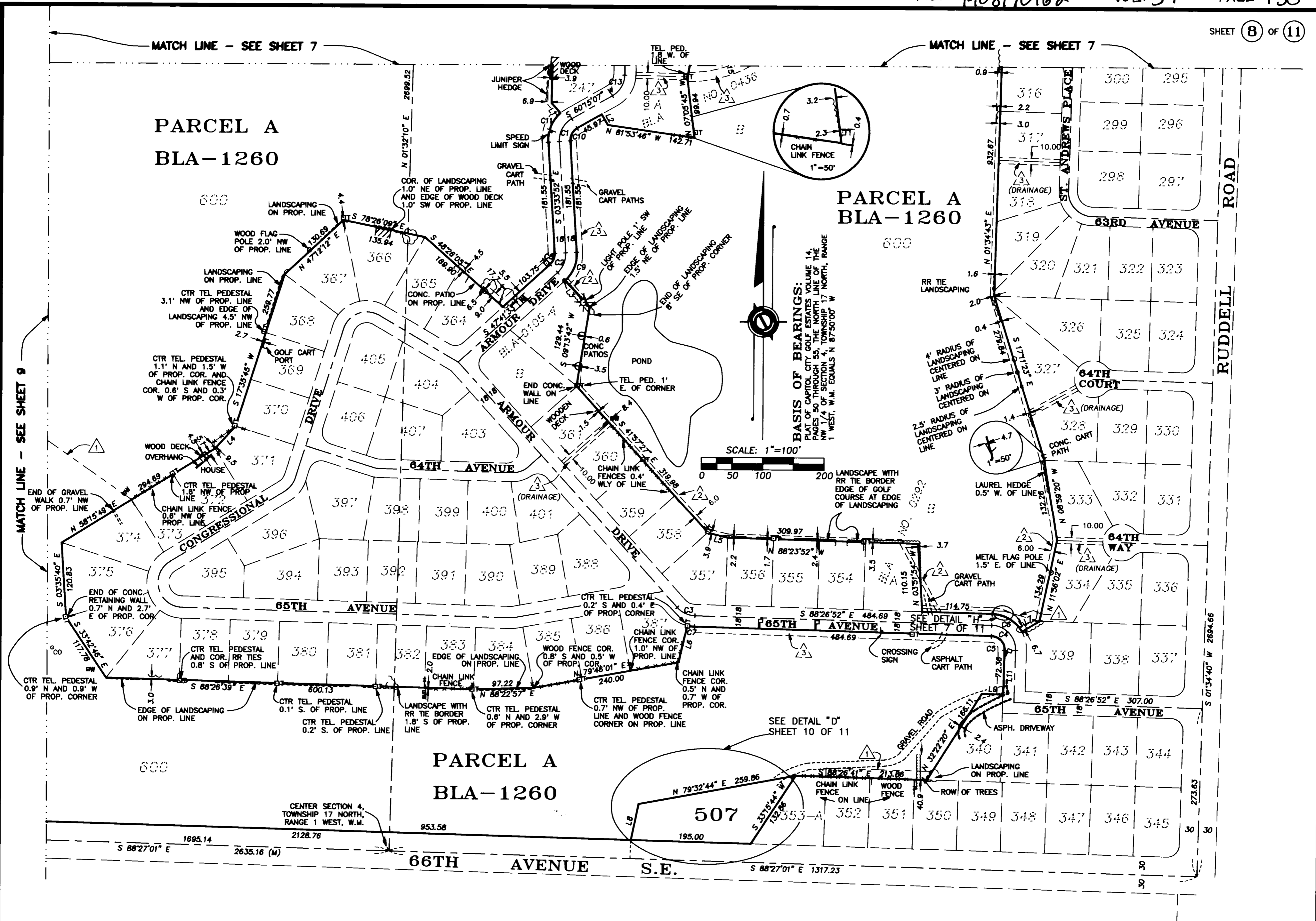
MATCH LINE - SEE SHEET 7

PARCEL A
BLA-1260

PARCEL A
BLA-1260

PARCEL A
BLA-1260

Survey
V. 34 P. 130



AUDITOR'S CERTIFICATE
 Filed for record this _____ day of _____, 19____ at _____ M. in book _____ of Surveys at page _____ at the request of JEFF S. PANTIER
 THURSTON COUNTY AUDITOR DEPUTY

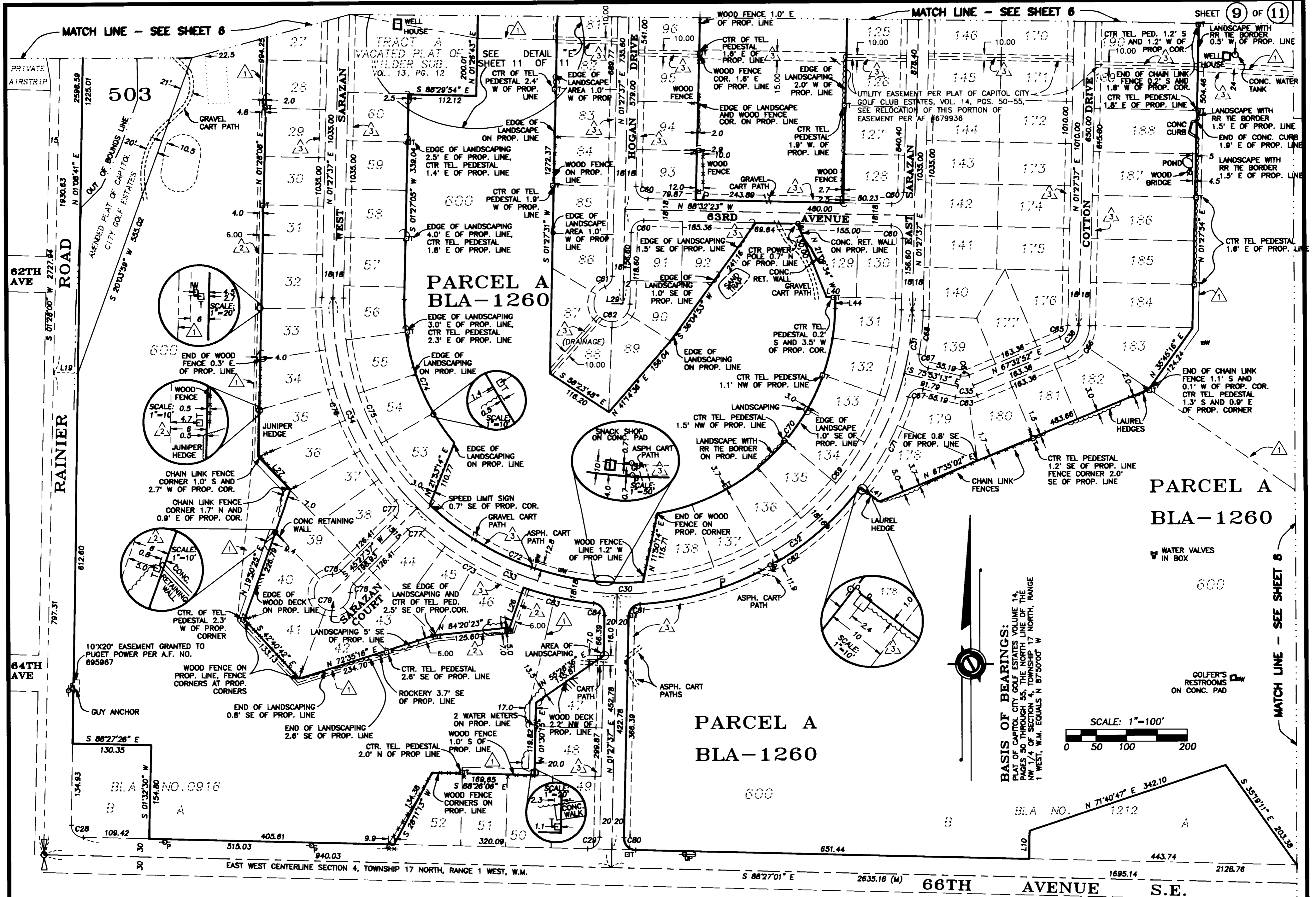
SURVEYOR'S CERTIFICATE
 This map correctly represents a survey made by me or under my direction in conformance with the requirements of the Survey Recording Act at the request of NATIONAL GOLF PROPERTIES, INC.
Jeff S. Pantier Aug. 4, 1994 DATE
 JEFF S. PANTIER REGISTERED PROFESSIONAL LAND SURVEYOR CERT. #28073 EXPIRES 5/21/98



JAMES A. PANTIER & ASSOC., INC.
 LAND SURVEYORS
 A Professional Services Corporation
 6326 MARTIN WAY SUITE G
 LACEY, WA 98516
 491-9744
 DRAWN BY: L. PILIARIS CHECKED BY: J.S.P. JOB NO: P2714

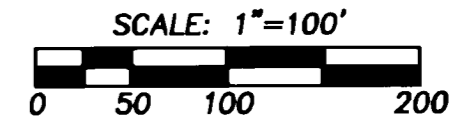
AUDITOR'S INDEXING DATA

QUARTER	SECTION	TOWNSHIP	RANGE
NW 1/4 OF SW 1/4 OF NE 1/4 OF SE 1/4 OF SW 1/4 OF	4	17N	1W
			W. M.



Survey V.34 P.131

BASIS OF BEARINGS:
 PLAT OF CAPITOL CITY GOLF ESTATES VOLUME 14, PAGES 50 THROUGH 55, THE NORTH LINE OF THE NW 1/4 OF SECTION 4, TOWNSHIP 17 NORTH, RANGE 1 WEST, W.M. EQUALS N 87°50'00" W



MATCH LINE - SEE SHEET 8

AUDITOR'S CERTIFICATE
 Filed for record this _____ day of _____, 19____ at _____ M. in book _____ of Surveys at page _____ at the request of JEFF S. PANTIER
 THURSTON COUNTY AUDITOR _____ DEPUTY _____

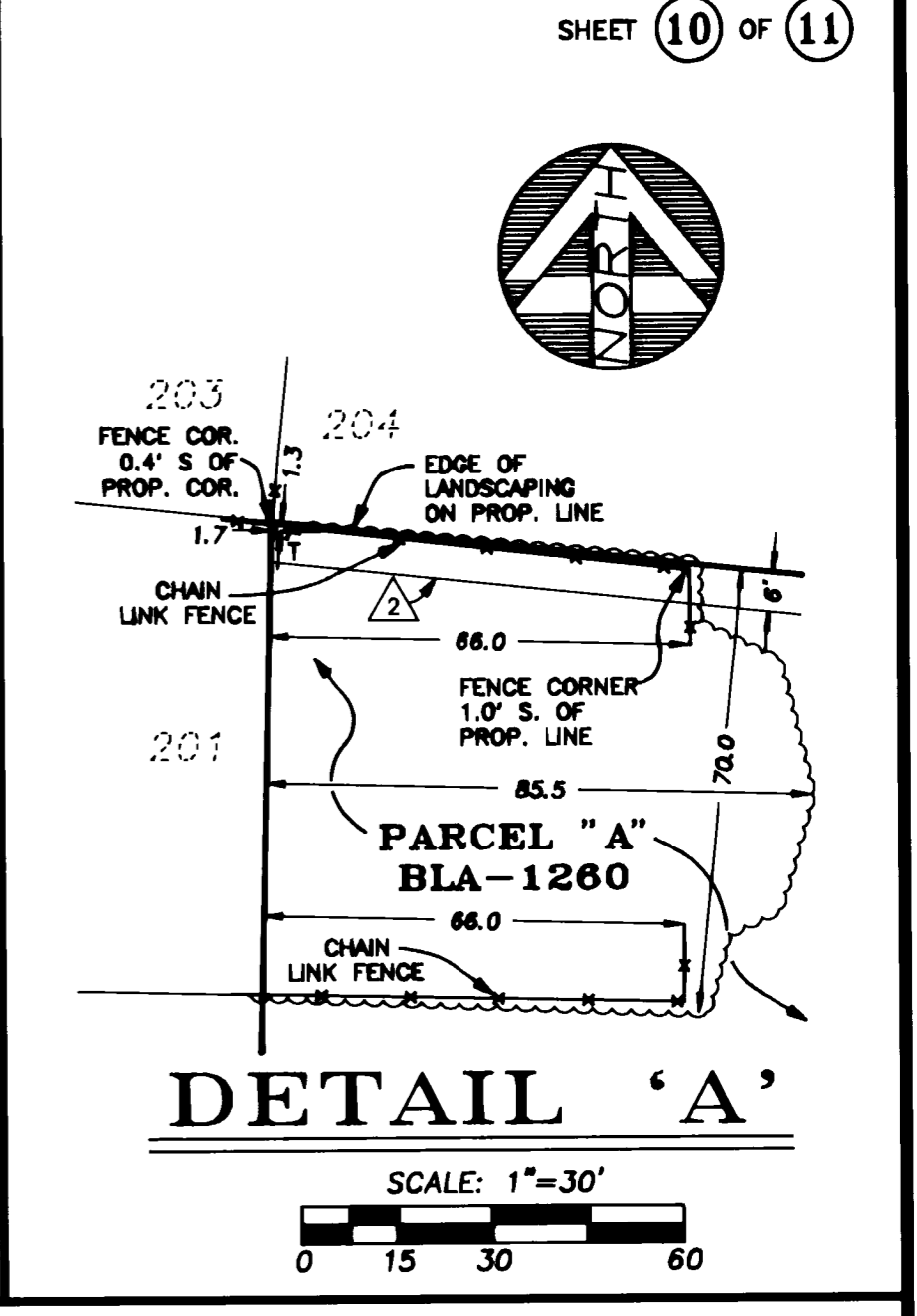
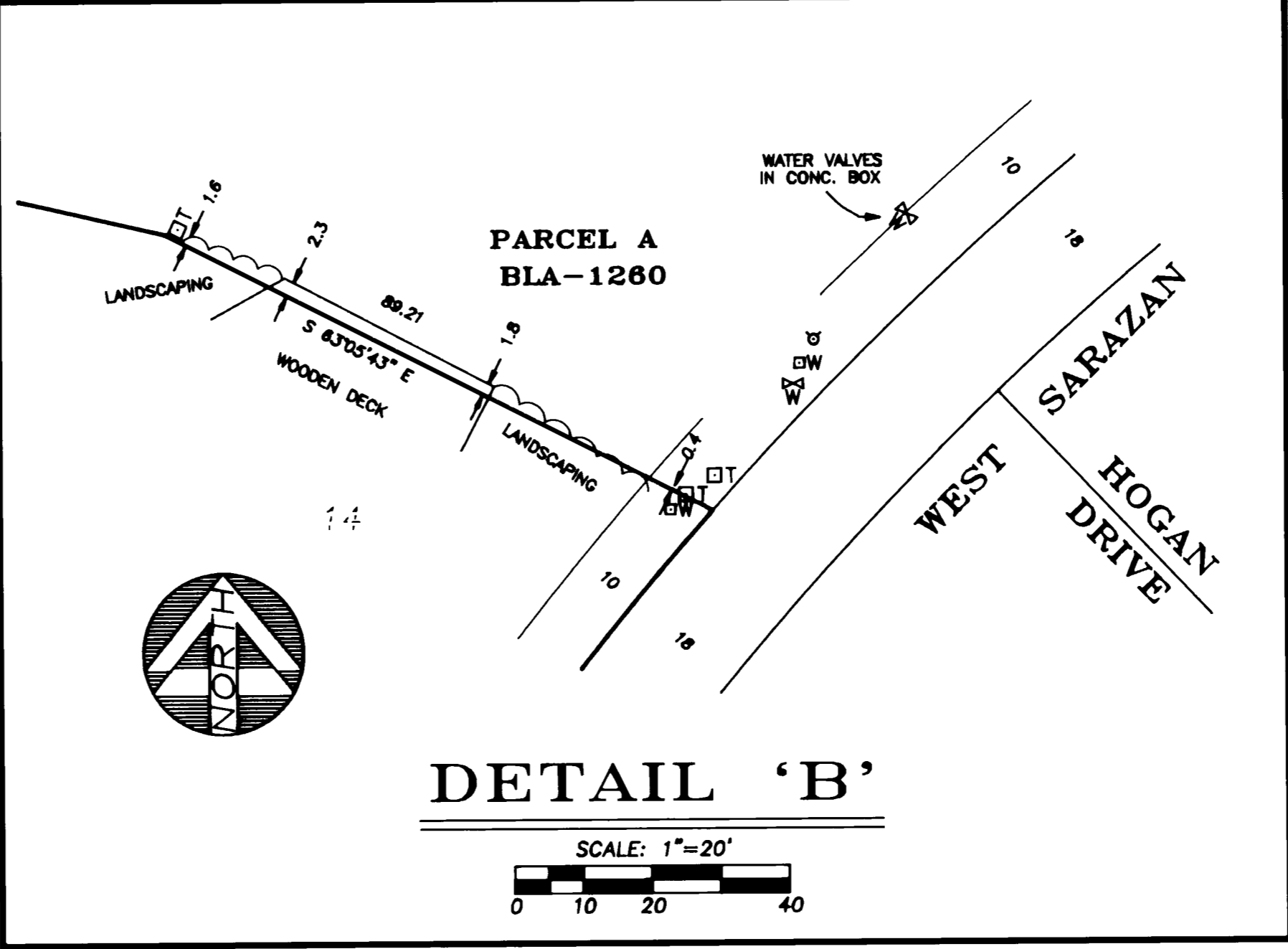
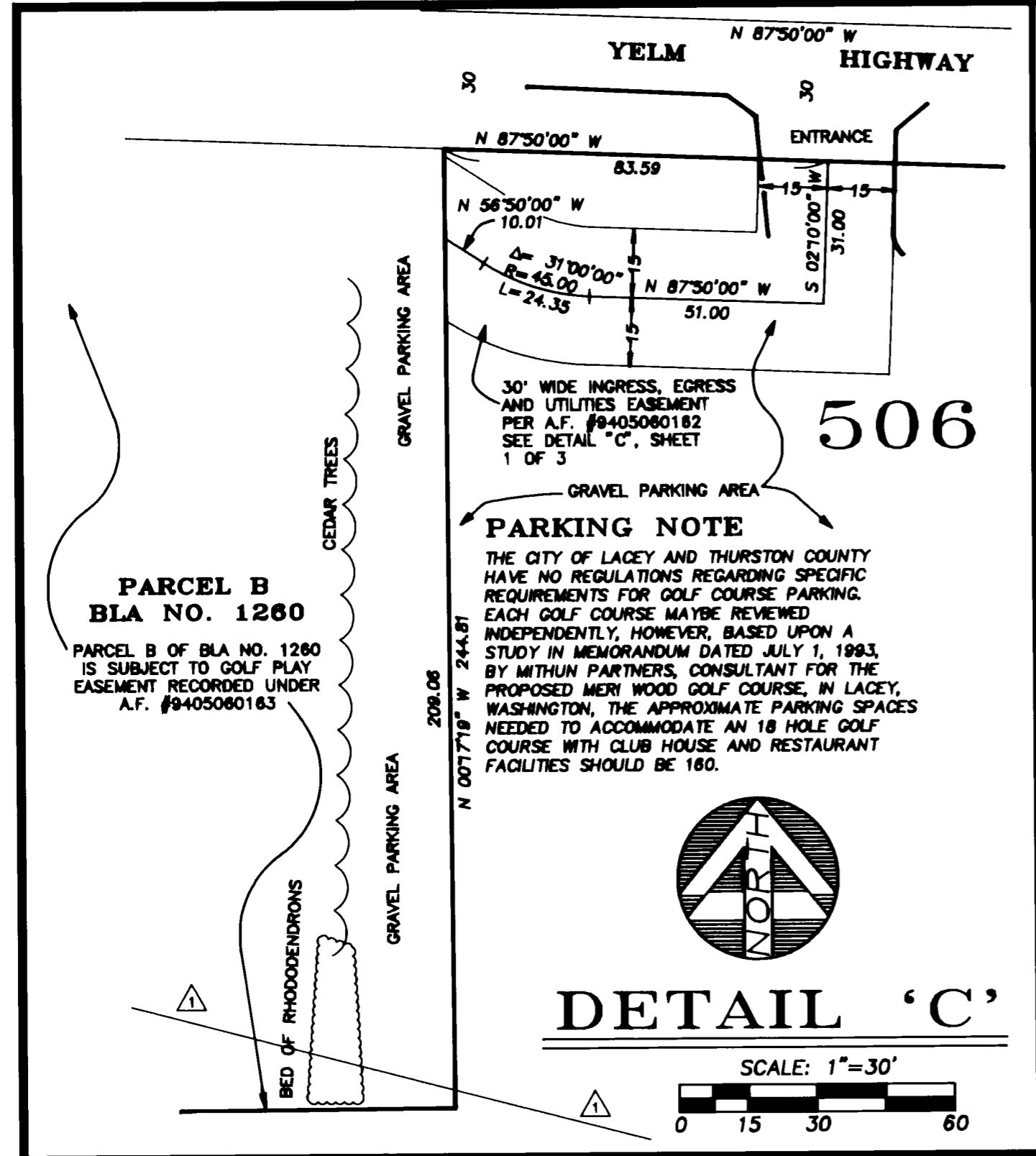
SURVEYOR'S CERTIFICATE
 This map correctly represents a survey made by me or under my direction in conformance with the requirements of the Survey Recording Act at the request of NATIONAL GOLF PROPERTIES, INC.
Jeff S. Pantier Aug. 4, 1994
 JEFF S. PANTIER DATE
 REGISTERED PROFESSIONAL LAND SURVEYOR CERT. #28073



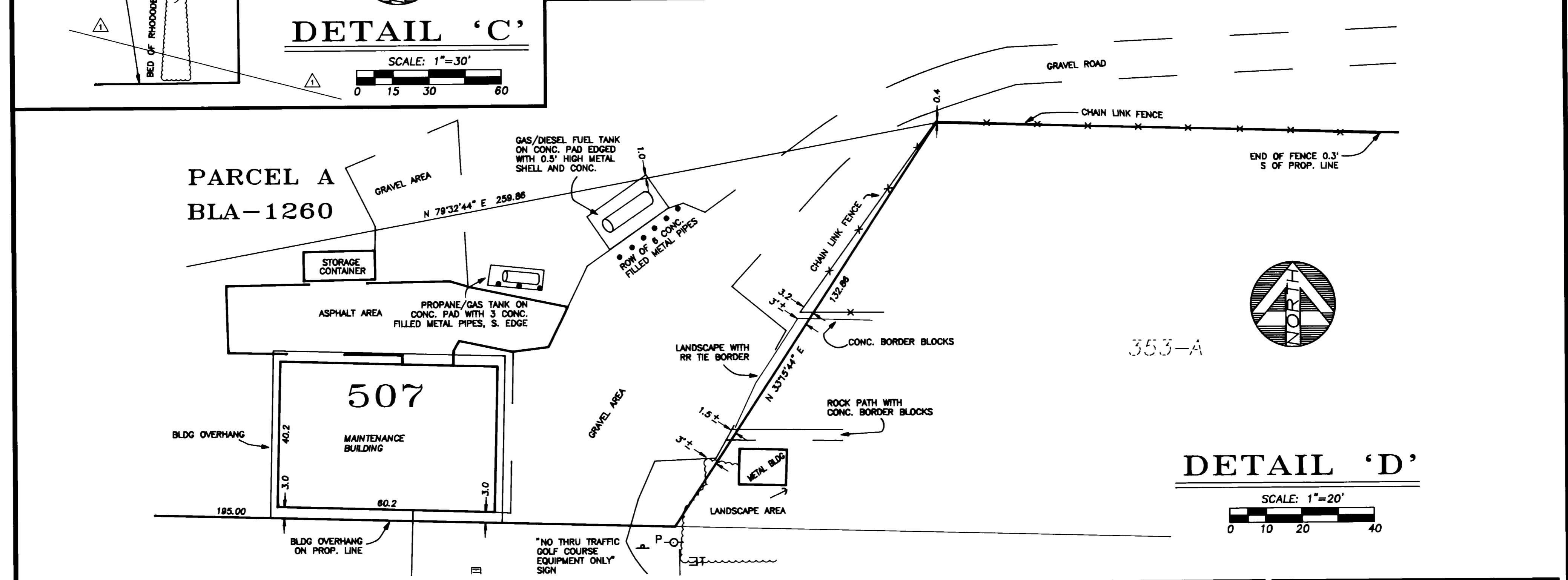
JAMES A. PANTIER & ASSOC., INC.
LAND SURVEYORS
A Professional Services Corporation
 6326 MARTIN WAY SUITE G
 LACEY, WA 98516
 491-9744
 DRAWN BY: L. PILIARIS CHECKED BY: J.S.P. JOB NO: P2714

AUDITOR'S INDEXING DATA

QUARTER	SECTION	TOWNSHIP	RANGE
NW 1/4 OF SECTION 4	4	17N	1W
SW 1/4 OF SECTION 4			
SE 1/4 OF SECTION 4			
NE 1/4 OF SECTION 4			
W. M.			

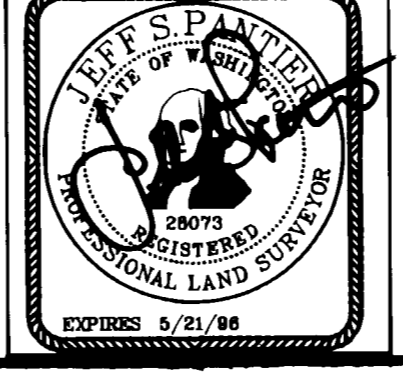


Survey V. 34 p. 132



AUDITOR'S CERTIFICATE
Filed for record this _____ day of _____, 19____ at _____ M. in book _____ of Surveys at page _____ at the request of JEFF S. PANTIER
THURSTON COUNTY AUDITOR DEPUTY

SURVEYOR'S CERTIFICATE
This map correctly represents a survey made by me or under my direction in conformance with the requirements of the Survey Recording Act at the request of NATIONAL GOLF PROPERTIES, INC.
Jeff S. Pantier Aug 4, 1994
JEFF S. PANTIER REGISTERED PROFESSIONAL LAND SURVEYOR DATE CERT. #28073



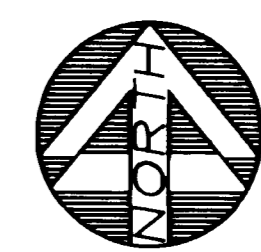
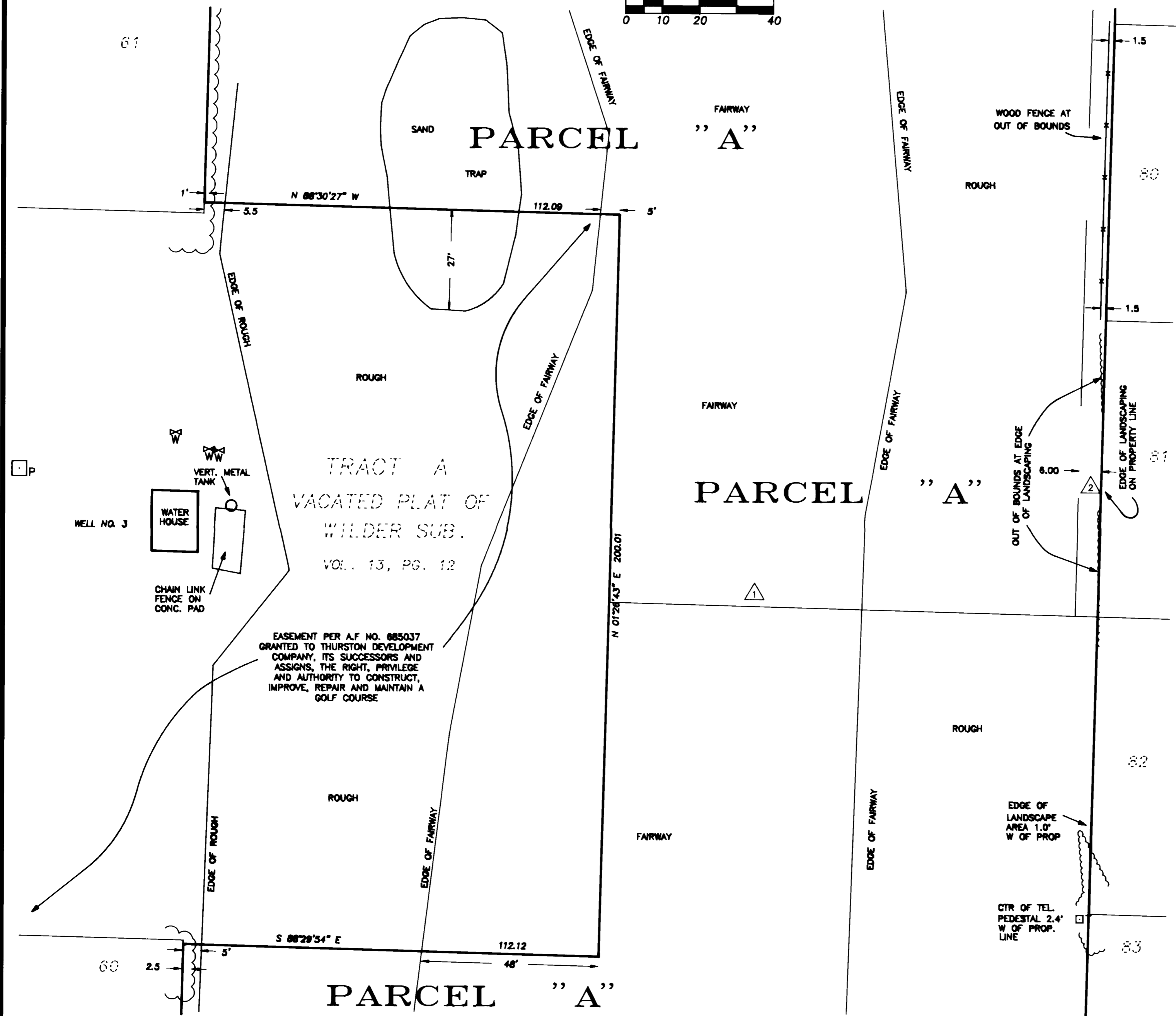
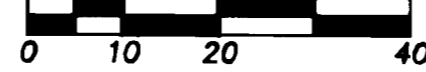
JAMES A. PANTIER & ASSOC., INC.
LAND SURVEYORS
A Professional Services Corporation
6326 MARTIN WAY SUITE G
LACEY, WA 98516
491-9744
DRAWN BY: L. PILIARIS CHECKED BY: J.S.P. JOB NO: P2714

AUDITOR'S INDEXING DATA

QUARTER	SECTION	TOWNSHIP	RANGE
NW 1/4 OF SW 1/4 OF NW 1/4 OF SW 1/4 OF NW 1/4	4	17N	1W
			W. M.

DETAIL "E"

SCALE: 1"=20'



BASIS OF BEARINGS:
 PLAT OF CAPITOL CITY GOLF ESTATES VOLUME 14,
 PAGES 50 THROUGH 55, THE NORTH LINE OF THE
 NW 1/4 OF SECTION 4, TOWNSHIP 17 NORTH, RANGE
 1 WEST, W.M. EQUALS N 87°50'00" W

Survey
 V. 34 P. 133

AUDITOR'S CERTIFICATE
 Filed for record this _____ day of _____, 19____ at _____ M. in book _____ of Surveys at page _____ at the request of JEFF S. PANTIER
 THURSTON COUNTY AUDITOR DEPUTY

SURVEYOR'S CERTIFICATE
 This map correctly represents a survey made by me or under my direction in conformance with the requirements of the Survey Recording Act at the request of NATIONAL GOLF PROPERTIES, INC.
Jeff S. Pantier Alb. 4, 1994
 DATE
 JEFF S. PANTIER REGISTERED PROFESSIONAL LAND SURVEYOR CERT. #28073



JAMES A. PANTIER & ASSOC., INC.
LAND SURVEYORS
A Professional Services Corporation
 6326 MARTIN WAY SUITE G
 LACEY, WA 98516
 491-9744
 DRAWN BY: L. PILIARIS CHECKED BY: J.S.P. JOB NO: P2714

AUDITOR'S INDEXING DATA

QUARTER	SECTION	TOWNSHIP	RANGE
NW 1/4 OF SW 1/4 OF NW 1/4 OF SW 1/4 OF NW 1/4	4	17N	1W
			W. M.